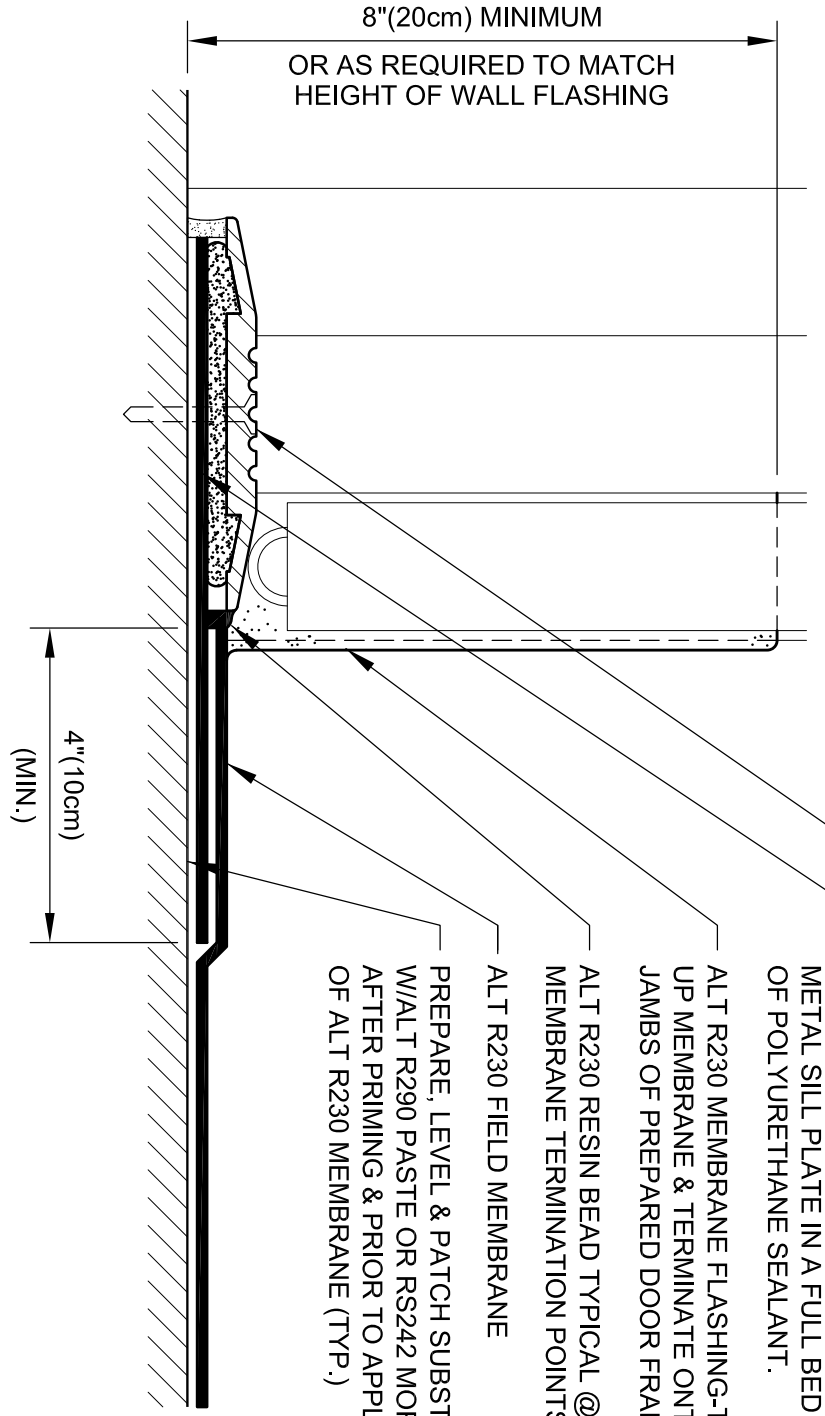


FRONT VIEW

8"(20cm) MINIMUM
OR AS REQUIRED TO MATCH
HEIGHT OF WALL FLASHING



4"(10cm)
(MIN.)

- METAL SILL FLASHING SET IN BED OF SEALANT (BY OTHERS)
- EXTEND ALT R230 MEMBRANE FLASHING UNDER METAL SILL PLATE & REINSTALL METAL SILL PLATE IN A FULL BED OF POLYURETHANE SEALANT.
- ALT R230 MEMBRANE FLASHING-TURN UP MEMBRANE & TERMINATE ONTO JAMBS OF PREPARED DOOR FRAME.
- ALT R230 RESIN BEAD TYPICAL @ ALL MEMBRANE TERMINATION POINTS.
- ALT R230 FIELD MEMBRANE
- PREPARE, LEVEL & PATCH SUBSTRATE W/ALT R290 PASTE OR RS242 MORTAR AFTER PRIMING & PRIOR TO APPLICATION OF ALT R230 MEMBRANE (TYP.)



FLUSH DOOR SILL FLASHING

DRAWING NO.:

M-2C

REVISION 0	ISSUE DATE 1-15-2010	SCALE N.T.S.	DRAWN BY D.R.W.
---------------	-------------------------	-----------------	--------------------