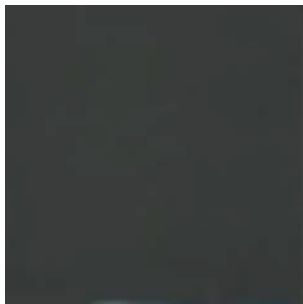

ALT Standard PMMA Color Chart

ALT R230 & ALT Finish 288 Resins



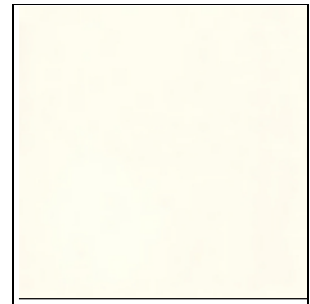
Technical Data Sheet



Traffic Grey RAL 7043



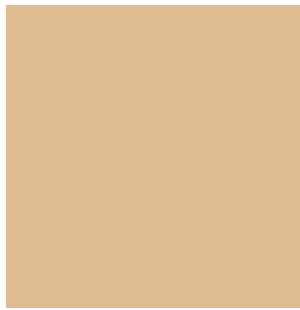
Black RAL 9017



White RAL 9010



Medium Grey RAL 7030



Light Beige RAL 1001



Yellow RAL 1023



Light Grey RAL 7032



Terracotta RAL 8004



Light Patina RAL 6021



Blue Grey RAL 7031



Chestnut RAL 8024



Dark Patina RAL 6000

When ordering colors, please indicate the appropriate RAL color number. Please note there may be slight variations in shade between actual colors and those shown here due to the nature of printing technology used. Custom colors can be produced to order subject to minimum quantities and special pricing.

DISCLAIMER

NO WARRANTY, EXPRESS OR IMPLIED, IS MADE IN THIS DOCUMENT. THE PRODUCT IS NOT CLAIMED TO BE MERCHANTABILITY OR FIT FOR ANY PARTICULAR PURPOSE. User and certified ALT Global applicators determine suitability only. See individual ALT Global product data sheets, MSDS sheets, guide specifications and details for complete information regarding the suitability, application and handling of ALT Global products.